

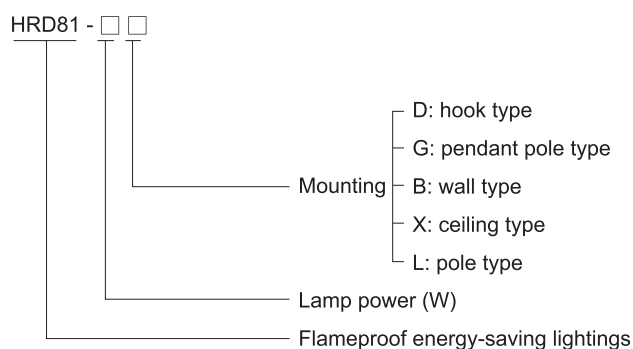
Pendant Light Fittings

HRD81 Series Flameproof Energy-saving Lightings



- ◆ Explosion protection to
 - CENELEC
 - IEC
 - NEC
- ◆ Can be used in
 - Zone 1 and Zone 2
 - Zone 21 and Zone 22
 - Class I, Zone 1 and Zone 2
 - Class I, Division 1, Groups A, B, C, D
- ◆ Two enclosure types separately for 42W and 68W compact energy-saving lamps, with good performance including rapid starting, flash free, high lighting efficiency, long service life and energy saving, etc.
- ◆ The luminous intensity of 42W compact energy-saving lamp equals to 80W mercury lamp; the luminous intensity of 68W compact energy-saving lamp equals to 125W mercury lamp.
- ◆ Powder coated wire guard, white.
- ◆ Toughened glass cover resistant to temperature changes.

Catalogue number logic



Selection table

Type / Ordering code	Lamp power (W)	Weight (kg)	Type / Ordering code	Lamp power (W)	Weight (kg)
HRD81-42D	42	4.10	HRD81-68D	68	6.20
HRD81-42G	42	5.60	HRD81-68G	68	7.70
HRD81-42B	42	5.85	HRD81-68B	68	7.95
HRD81-42X	42	5.20	HRD81-68X	68	7.30
HRD81-42L	42	4.20	HRD81-68L	68	6.30

Note: 1. Products above include all the mounting accessories listed in Mounting Accessories & Spare Parts Table (see P2/95).
 2. The light fittings are supplied without external reflector. Please specify when ordering.
 3. The light fittings are supplied with lamps.

Zones 1&2; 21&22

Pendant Light Fittings

HRD81 Series Flameproof Energy-saving Lightings

Technical data

Flameproof energy-saving lightings HRD81-□□

Explosion protection

- Gas explosion protection
- Dust explosion protection

Ex II 2 G Ex d IIC T4
Ex tD A21 IP66 T130°C

Certificates

- For gas explosion protection
- For dust explosion protection

LCIE 07 ATEX 6037; IECEx CQM 08.0002
PCEC (China)

Conformity to standards

EN 60079-0, EN 60079-1
IEC 60079-0, IEC 60079-1, IEC 61241-0, IEC 61241-1

Material

- Enclosure
- Wire guard
- Transparent cover
- Internal reflector
- External reflector (optional)
- Exposed fastener

Copper-free aluminium, powder coated surface, yellow (RAL1021)
Powder coated carbon steel (white)
Toughened glass, stands 4J impact
High-purity aluminium
Pure aluminium, anodic-oxidation treatment for surface
Stainless steel

Lamp

- Lamp holder
- Lamp specification
- Lamp power (W)

E27
Compact energy-saving lamp (for sealed atmosphere)
42W
68W

Rated voltage

220~240V AC 50/60Hz

Earthing protection

M5 (internal & external earth bolts)

Degree of protection

IP66

Ambient temperature

-20°C~+55°C

Terminal

3 x 1.5~2.5mm² (L+N+PE)

Cable entries

G3/4" (NPT3/4" or M25x1.5 with connector on request)

Cable gland

See Mounting Accessories & Spare Parts Table

Available cable outer diameter

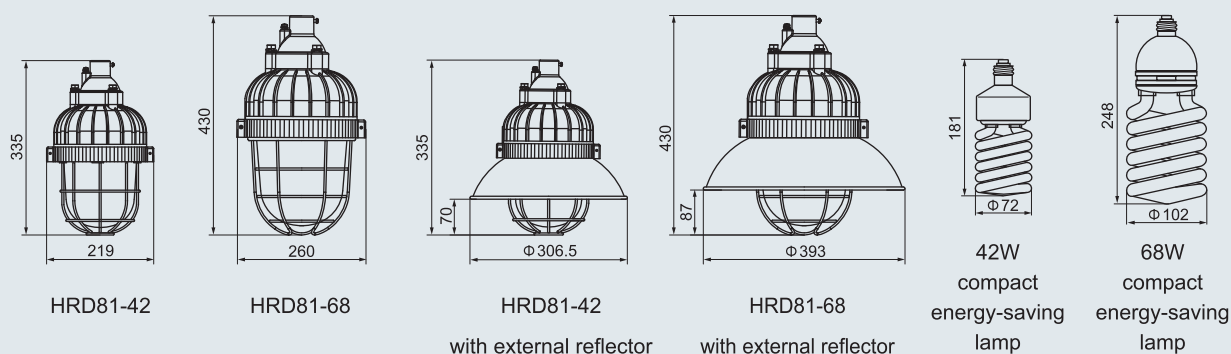
Φ 10~Φ 14 (mm)



Lamp data

Energy-saving lamp	Rated voltage	Working current	Luminous flux	Service life
42W	220~240V AC	380mA	2800lm	10000h
68W	220~240V AC	618mA	4200lm	10000h

Dimension drawings (all dimensions in mm) - subject to alteration



Pendant Light Fittings

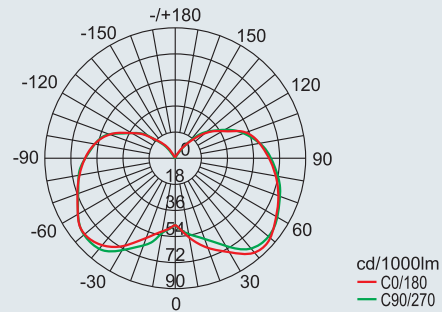
HRD81 Series Flameproof Energy-saving Lightings

Photometric data



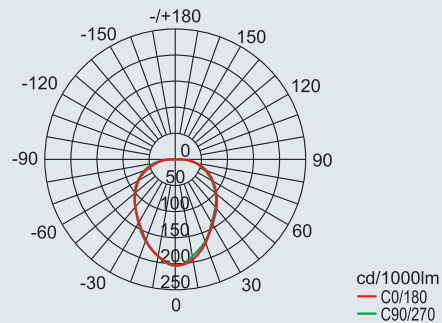
HRD81-42□(Without external reflector)

Rated luminous flux: 2800lm



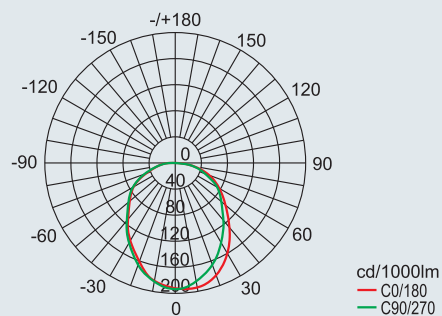
HRD81-42□(With external reflector)

Rated luminous flux: 2800lm



HRD81-68□(With external reflector)

Rated luminous flux: 4200lm



We can provide lighting design and data by professional lighting software DIALUX based upon simulated site situation on request.

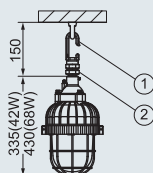
Pendant Light Fittings

HRD81 Series Flameproof Energy-saving Lightings

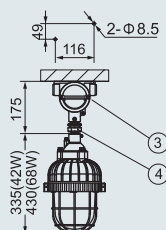
Mounting type (all dimensions in mm) – subject to alteration

Installation reference

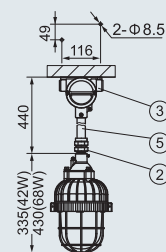
D: hook type



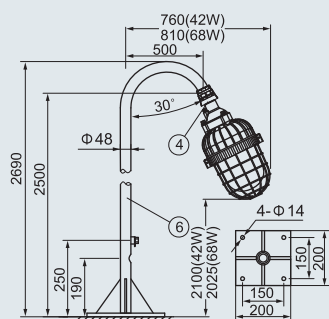
X: ceiling type



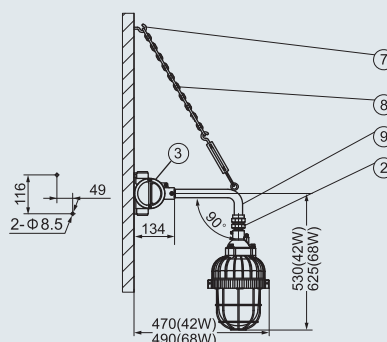
G: pendant pole type



L: pole type



B: wall type



Mounting Accessories & Spare Parts Table

Supplied according to the mounting type

Mounting type	Accessories			Ordering code	Weight (kg)
	Name	Qty	Illustration		
D: hook type	①.Hook (carbon steel)	1		61020	0.20
	②.BGJ-III Explosion-proof connector	1	G3/4" (M)/M25 x 1.5(F) Carbon steel	81D02	0.26
X: ceiling type	③.BHD51 Explosion-proof junction box	1	Copper-free aluminium (Ex d IIC)	BHD51-F	0.80
	④.BGJ-III Explosion-proof connector	1	M25 x 1.5(M)/ G3/4" (M) Carbon steel	81X01	0.30
G: pendant pole type	②.BGJ-III Explosion-proof connector	1	G3/4" (M)/M25 x 1.5(F) Carbon steel	81D02	0.26
	③.BHD51 Explosion-proof junction box	1	Copper-free aluminium (Ex d IIC)	BHD51-F	0.80
	⑤.Straight pipe (M25 x 1.5)	1	Length: 300mm	81G01	0.41
L: pole type	④.BGJ-III Explosion-proof connector	1	M25 x 1.5(M)/ G3/4" (M) Carbon steel	81X01	0.30
	⑥.Pole	1	Φ 48mm	81L01	-
B: wall type	②.BGJ-III Explosion-proof connector	1	G3/4" (M)/M25 x 1.5(F) Carbon steel	81D02	0.26
	③.BHD51 Explosion-proof junction box	1	Copper-free aluminium (Ex d IIC)	BHD51-F	0.80
	⑨.Elbow pipe 90° (M25 x 1.5)	1	Length: 400mm	51022	0.55
	⑧.Chain	1	Length: 450mm	80B11	0.08
	⑦.Hook expansion bolt	1		52017	0.03

Note: 1. Accessories not in the table shall be supplied by user.

2. Pole ⑥ shall not be supplied with light fittings; if required, please specify when ordering.