

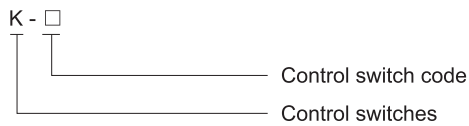
Components for BZC8050 Control Stations BK8050 Series Control Switches

- ◆ Explosion protection to
 - GENELEC
 - IEC
 - NEC
- ◆ Can be used in
 - Zone 1 and Zone 2
 - Zone 21 and Zone 22
 - Class I, Zone 1 and Zone 2
 - Class I, Division 2, Groups A, B, C, D
- ◆ Number of pole: 2P, 3P, 4P, 6P.
- ◆ Available in latching and spring-return forms.



■ Catalogue number logic

BK8050(K for short)



Components for BZC8050 Control Stations BK8050 Series Control Switches

Selection table of control switches

Control switch code	Chart of contact	Equivalent switch	Position (solid line: location; dash line: spring return)	Instruction for equivalent function
a				a. Functional wiring is the same as double buttons with auto-reset function.
b				B. Functional wiring is the same as double buttons; auto-reset after start; lock-stop gear added to avoid mistake operation.
c				c. Button with 2 NO contacts and available at auto-reset function. Suitable for high-voltage engine control circuit or function panel uses switch code "a".
d				d. Low-power switch.
e				e. Function is the same as three buttons; able to control engine in forward and backward rotation. FW&BW starting positions can auto-reset.
f				f. Selection switch with stop gear.
g				g. Be equal to mounting two buttons and one changeover switch in one axis. Possible to output contact signal or monitoring signal between start and stop.
h				h. Multi-signals transmit gradually.



Components for BZC8050 Control Stations BK8050 Series Control Switches

Selection table of control switches				
Control switch code	Chart of contact	Equivalent switch	Position (solid line: location; dash line: spring return)	Instruction for equivalent function
i				I. Add function of transmitting resultant signal on the base of function panel uses switch code "h" .
j				j. Two positions step; change-over gradually.
k				k. Changeover switch.
i				I. Selection switch with three poles and two launches.
m				m. Three-position changeover switch among auto, manual and start; auto-reset after start; it can convert to auto gear only after passing stop gear.
n				n. Structure is a little different to universal structure of switch code "m" ; it directly rotates to auto gear without passing stop gear after starts.



Components for BZC8050 Control Stations BK8050 Series Control Switches

Selection table of control switches

Control switch code	Chart of contact	Equivalent switch	Position (solid line: location; dash line: spring return)	Instruction for equivalent function
o				<p>O. Double contacts auto reset for start, with lock-stop gear; lock switch at stop gear to prevent mistake operation.</p>
p				<p>p. Double contacts for stop, to substitute switch code "a" and "c" for start and stop; auto-reset.</p>
p				<p>q. Stop with double contacts, with lock stop gear; auto-reset after start; possible to add lock-stop gear to add lock-stop gear to lock switch at stop gear to prevent mistake operation.</p>
r				<p>r. Double contacts for both start and stop; it is same as universal panel of switch code "a", with auto-reset for start and stop.</p>
s				<p>s. Transmit a contact signal before start and stop.</p>
t				<p>t. With lock-stop gear for start and stop to prevent mistake operation; without auto-reset.</p>
u				<p>u. Double-control selection switch.</p>
v				<p>v. Changeover switch for voltage phase-changing and measuring.</p>



Components for BZC8050 Control Stations BK8050 Series Control Switches

Selection table of control switches				
Control switch code	Chart of contact	Equivalent switch	Position (solid line: location; dash line: spring return)	Instruction for equivalent function
W				w. One 2NO auto-reset pushbutton, both left and right are the same.
X				x. Two 2NO auto-reset buttons.

Technical data

Control switches BK8050

Explosion protection	⊕ II 2 G Ex d e IIC Gb
Certificates	LCIE 09 ATEX 3096U; IECEx CQM 11.0011U; KZ.7500525.22.01.00374 (CU-TR)
Conformity to standards	EN 60079-0, EN 60079-1, EN 60079-7 IEC 60079-0, IEC 60079-1, IEC 60079-7
Enclosure material	Plastic
Rated voltage	Max. 415V AC
Rated current	16A
Switch angle	n x 45°/n x 90°
Service life	10 ⁵ times
Ambient temperature	-20°C~+70°C
Cable connection	2.5mm ²
Material of rotary actuator	Polycarbonate (PC)
Panel material	Acrylonitrile-butadiene-styrene (ABS)
Seal material	Nitrile butadiene rubber (NBR)

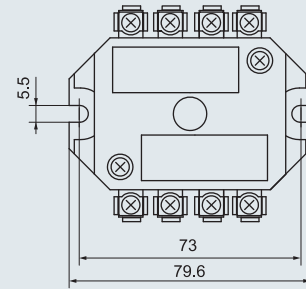
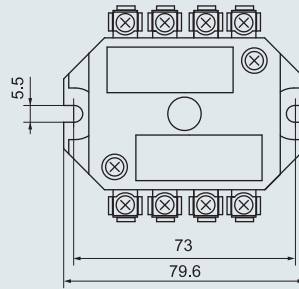
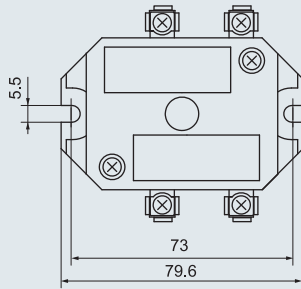
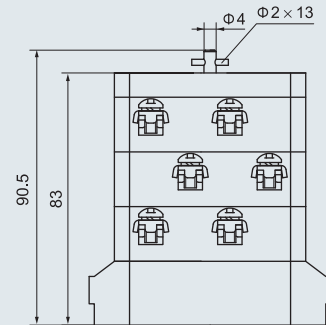
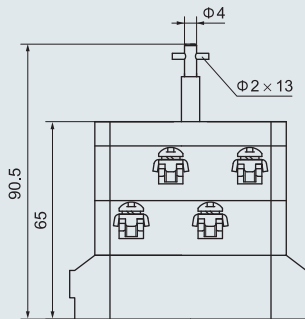
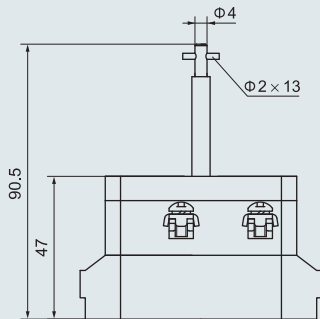


Accessories

Description	Illustration	Ordering code	Weight (kg)
Rotary actuator (padlockable)		40119	0.05

Components for BZC8050 Control Stations BK8050 Series Control Switches

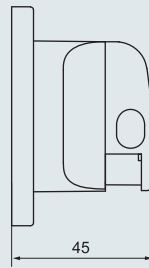
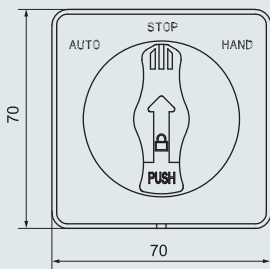
Dimension drawings (all dimensions in mm) - subject to alteration



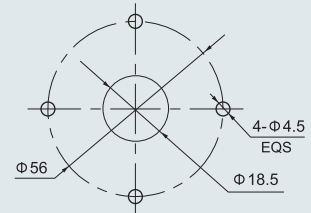
Control switch 2 poles

Control switch 3 or 4 poles

Control switch 6 poles



Rotary actuator



Mounting hole